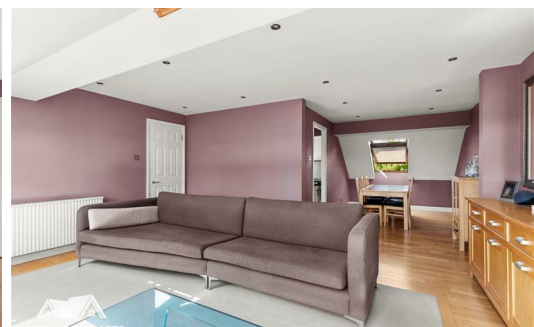




FORTUNE & COATES

The People's Estate Agent

<https://www.fortuneandcoates.co.uk>



74 The Meadows, Sawbridgeworth, CM21 9RA

Asking price £220,000

Fortune and Coates are excited to welcome to the market this outstanding two bedroom top floor apartment situated in the highly sought after and convenient location of The Meadows, Sawbridgeworth, Herts.

This home is immaculately presented throughout and comprises an inviting entrance hallway with storage cupboards. The living room/dining room is in an "L" shape and is light, bright, stylish and comfortable with skylight windows and spotlights. The dining area is a space for formal and family dining and leads through to the modern kitchen with a range of modern wall and base units, space for cooker and American fridge/freezer, plumbing for a washing machine and dishwasher, breakfast bar and plenty of cupboard space. Both bedrooms are well proportioned with them having built in wardrobes. The spacious family shower room has a walk in shower, low level w.c and glass wash hand basin. Outside there is communal gardens and a private car port with additional visitors parking.

Family Room 14'8" x 18'0" (4.48 x 5.50)

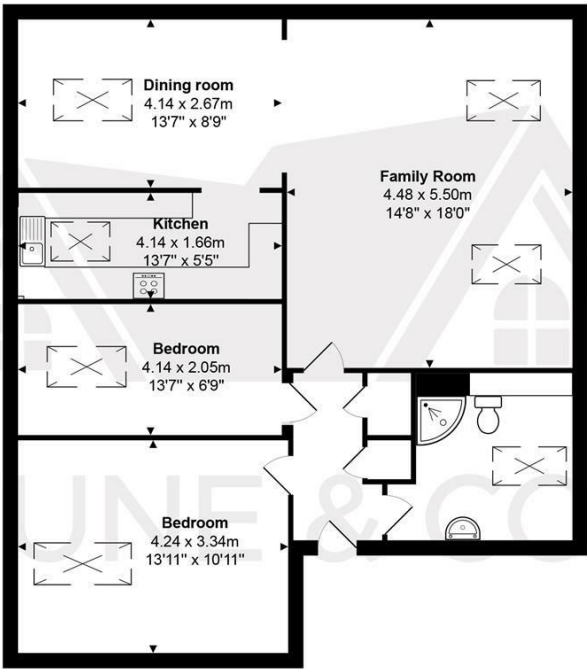
Dining Room 13'6" x 8'9" (4.14 x 2.67)

Bedroom 13'10" x 10'11" (4.23 x 3.34)

Bedroom 13'6" x 6'8" (4.14 x 2.05)

AGENT NOTE: The information provided about this property does not constitute or form part of an offer or contract, nor may it be regarded as representations. All interested parties must verify accuracy and your solicitor must verify tenure/lease information, fixtures & fittings and, where the property has been extended/converted, planning/building regulation consents. All dimensions are approximate and quoted for guidance only as are floor plans which are not to scale and their accuracy cannot be confirmed. Reference to appliances and/or services does not imply that they are necessarily in working order or fit for the purpose.

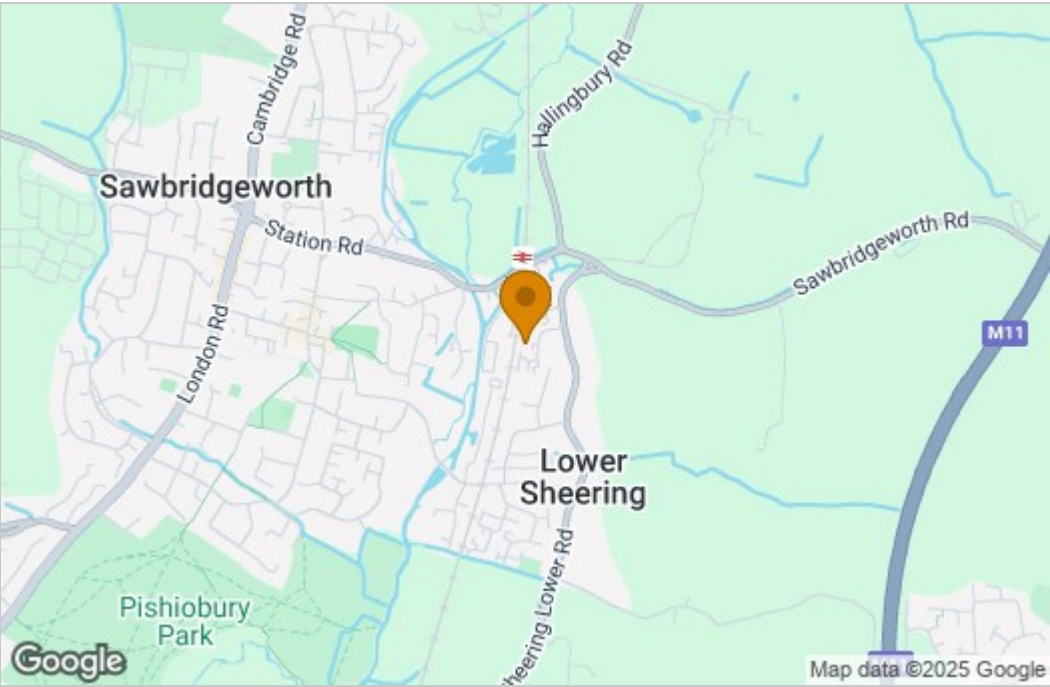
Floor Plan



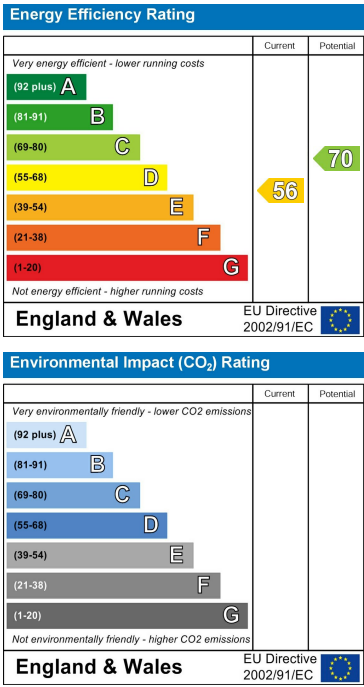
Total Area: 78.6 m² ... 846 ft²

THE FLOORPLAN IS FOR ILLUSTRATIVE PURPOSES ONLY AND IS NOT TO SCALE.
Measurements and features are approximate and may differ from the actual property. Verify all details independently; no liability is accepted for errors or omissions.
Property marketing provided by www.fotomarketing.co.uk

Area Map



Energy Efficiency Graph



These particulars, whilst believed to be accurate are set out as a general outline only for guidance and do not constitute any part of an offer or contract. Intending purchasers should not rely on them as statements of representation of fact, but must satisfy themselves by inspection or otherwise as to their accuracy. No person in this firms employment has the authority to make or give any representation or warranty in respect of the property.